



The most Comprehensive Range of Specific Fit Adapters for vehicles on Australian Roads.

An integral part of the Bleedpro system is our range of specific fit master cylinder reservoir adapters. These adapters have undergone extensive development and testing, with a result: simple and easy to use adapters to suit most vehicles on Australian roads.

A Bleedpro Pressure Bleeder package comes with a starter pack of 9 adapters. This is an ideal package for the general brake workshop. Adapter packages can be tailored to suit your individual needs from the wide range available.

The Bleedpro research and development team is continually working to increase the range and keep up to date with new vehicles as they are released, including both cars and commercial vehicles.

Starter Pack Adapters

Figure 1



Part No: E20W **Fitment: Brake**

Most European vehicles, Daewoo 1.5, Cielo, Espero, Kalos, Lanos, Leganza, Ford Transit, Kia Sportage, Holden Apollo, Astra, Vectra

Figure 2



Part No: G49 **Fitment: Brake. 43.5mm ID**

Ford Courier, Econovan, Laser, Mazda 323, 626, B series

Figure 3



Part No: G75 **Fitment: Brake. 78mm ID**

Mitsubishi Galant, Lancer, Pajero, Triton Proton

Figure 4



Part No: IHCA **Fitment: Clutch. 33mm ID**

Hino Trucks (Most), Holden Jackaroo, Rodeo Isuzu Trucks (Most), Nissan Navara, Patrol Subaru Brumby, L series Brake

Figure 5



Part No: NISLARGE **Fitment: Brake**

Ford Corsair, Nissan Maxima, Micra, Navara, Pintara, Patrol

Figure 6



Part No: PBroVAL **Fitment: Brake**

Ford Falcon, Territory, Holden Commodore Mitsubishi Magna

Figure 7



Part No: PPBA03 **Fitment: Brake**

Ford Escape, Explorer, Holden Commodore VZ, VE, Most Hyundai, Nissan Patrol GU, Pulsar, Tiida, Subaru Forester, Impreza, Liberty

Figure 8



Part No: PPBA10 **Fitment: Brake. 42mm ID**

Most Toyota's with soft clip on lid

Figure 9



Part No: UCA85P **Fitment: Brake & Clutch**

Universal Cone Adapter



Optional Adapters Available

Figure 10



Part No: 3053 **Fitment:** Brake. 54mm ID
Holden Rodeo, Jackaroo

Figure 11



Part No: 3054W **Fitment:** Brake. 56mm ID
Honda (Most Models mid 90's on)

Figure 12



Part No: B2.33 **Fitment:** Brake. 33mm ID
Landrover (Some)

Figure 13



Part No: B4.57 **Fitment:** Brake. 59mm ID
Suzuki Jimny, Sierra, Swift, Vitara

Figure 14



Part No: BF57 **Fitment:** Brake. 56/7mm ID
Honda (early) (some)

Figure 15



Part No: BF74 **Fitment:** Brake. 74mm ID
Honda (early) (some)

Figure 16



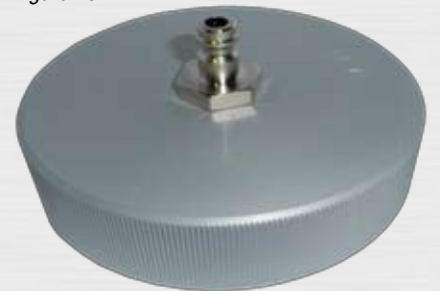
Part No: E20FF **Fitment:** Brake.
Ford Focus

Figure 17



Part No: G28 **Fitment:** Brake. 38mm ID
Kia Carnival, Pregio

Figure 18



Part No: G4.70 **Fitment:** Brake. 74.5mm ID
Mazda 121, Toyota Lexus

Figure 19



Part No: G48 **Fitment:** Brake. 45mm ID
Range Rover (early) (some)

Figure 20



Part No: G69 **Fitment:** Brake. 71.5mm ID
Diahatsu Charade, Feroza, Rocky

Figure 21



Part No: G76 **Fitment:** Brake. 46mm ID
Iveco



Optional Adapters Available

Figure 22



Part No: HBA **Fitment:** Brake. 39mm ID
Hino (most)

Figure 23



Part No: HBLA **Fitment:** Brake. 105mm ID
Hino (late)

Figure 24



Part No: HST007 **Fitment:** Clutch
Reverse Bleeding Adapter.
Fits onto bleeder on slave cylinder.

Figure 25



Part No: IBA **Fitment:** Brake. 59mm ID
Isuzu Trucks (Many)

Figure 26



Part No: ICA/1 **Fitment:** Clutch. 43mm ID
Isuzu Trucks.

Figure 27



Part No: PPBA01 **Fitment:** Brake. 30mm ID
Chrysler 330C, PT Cruiser, Voyager
Twin set. 3 lugs. Expandable O ring type.

Figure 28



Part No: PPBA04 **Fitment:** Brake. 32mm ID
Mazda 6
Adjustable 3 lug, expanding O ring type

Figure 29



Part No: PPBA05 **Fitment:** Brake
European Screw Type (Metal)

Figure 30



Part No: PPBA11 **Fitment:** Brake. 70mm ID
Toyota (some)

Figure 31



Part No: PPBA12 **Fitment:** Brake
Universal Flat Plate Adapter

Figure 32



Part No: BPAU90K **Fitment:** Brake
Universal Round Type

Figure 33



Part No: MO1102 **Fitment:** Brake
1 1/4" x 18 TPI
Suits most PBR cyls with cast iron reservoir



Optional Adapters Available

Figure 34



Part No: M01104 **Fitment: Brake.** 27mm ID
Most VW 67 on

Figure 35



Part No: M01110 **Fitment: Brake.** 25mm ID
Early British cars with Lockheed
Cyls, inc plastic reservoirs.

Figure 36



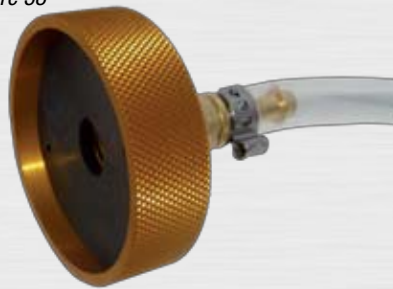
Part No: M01122 **Fitment: Brake**
Fits most American Wagner cyls
with cast reservoirs

Figure 37



Part No: M01150 **Fitment: Brake**
Harley Davidson Applications

Figure 38



Part No: M01162 **Fitment: Brake**
Brembo front cylinder—uses screws
from cap to retain it.

Figure 39



Part No: M01165 **Fitment: Brake**
Brembo rear cylinder

Distributed by: